

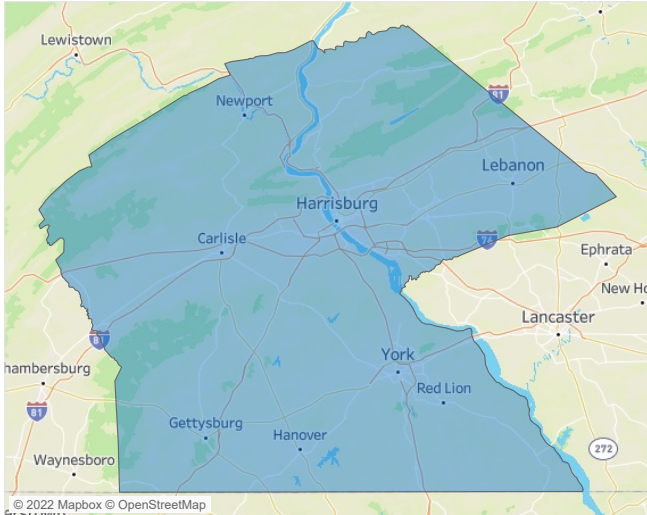


Jeff Adler  
Vice President  
[Jeff.Adler@yardi.com](mailto:Jeff.Adler@yardi.com)

Contacts

Liliana Malai  
Senior PPC Specialist  
[Liliana.Malai@yardi.com](mailto:Liliana.Malai@yardi.com)

Harrisburg  
August 2022



**Harrisburg** is the **66th** largest multifamily market with **58,841** completed units and **11,795** units in development, **1,174** of which have already broken ground.

New lease asking **rents** are at **\$1,372**, up **9.5%** ▲ from the previous year placing Harrisburg at **72nd** overall in year-over-year rent growth.

Multifamily housing **demand** has been negative with **-298** ▼ net units absorbed over the past twelve months. This is down **-1,052** ▼ units from the previous year's gain of **754** ▲ absorbed units.

**Employment** in Harrisburg has grown by **4.4%** ▲ over the past 12 months, while hourly wages have risen by **3.4%** ▲ YoY to **\$27.03** according to the *Bureau of Labor Statistics*.

