

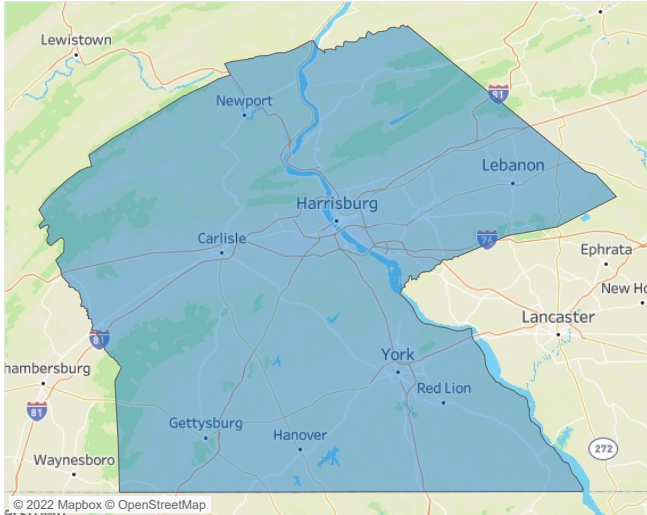


Jeff Adler
Vice President
Jeff.Adler@yardi.com

Contacts

Liliana Malai
Senior PPC Specialist
Liliana.Malai@yardi.com

Harrisburg
June 2022



Harrisburg is the **66th** largest multifamily market with **58,841** completed units and **11,660** units in development, **1,085** of which have already broken ground.

New lease asking **rents** are at **\$1,360**, up **10.9%** ▲ from the previous year placing Harrisburg at **75th** overall in year-over-year rent growth.

Multifamily housing **demand** has been negative with **-334** ▼ net units absorbed over the past twelve months. This is down **-1,343** ▼ units from the previous year's gain of **1,009** ▲ absorbed units.

Employment in Harrisburg has grown by **4.3%** ▲ over the past 12 months, while hourly wages have risen by **3.0%** ▲ YoY to **\$26.76** according to the *Bureau of Labor Statistics*.

