

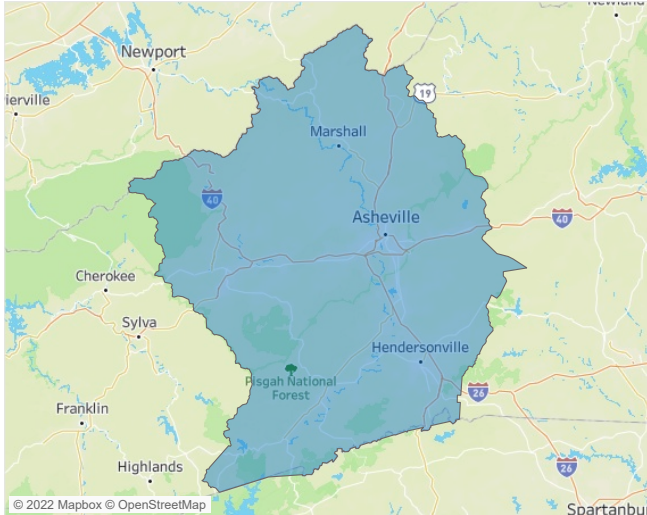


Jeff Adler  
Vice President  
[Jeff.Adler@yardi.com](mailto:Jeff.Adler@yardi.com)

Contacts

Liliana Malai  
Senior PPC Specialist  
[Liliana.Malai@yardi.com](mailto:Liliana.Malai@yardi.com)

Asheville  
April 2022



**Asheville** is the **112th** largest multifamily market with **20,014** completed units and **11,304** units in development, **1,971** of which have already broken ground.

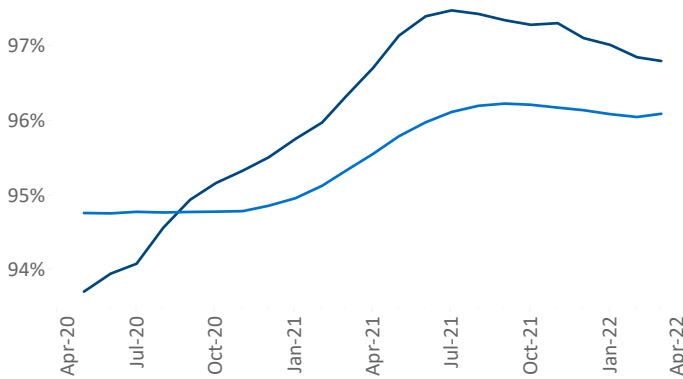
New lease asking **rents** are at **\$1,595**, up **20.8%** ▲ from the previous year placing Asheville at **8th** overall in year-over-year rent growth.

Multifamily housing **demand** has been rising with **682** ▲ net units absorbed over the past twelve months. This is down **-1,012** ▼ units from the previous year's gain of **1,694** ▲ absorbed units.

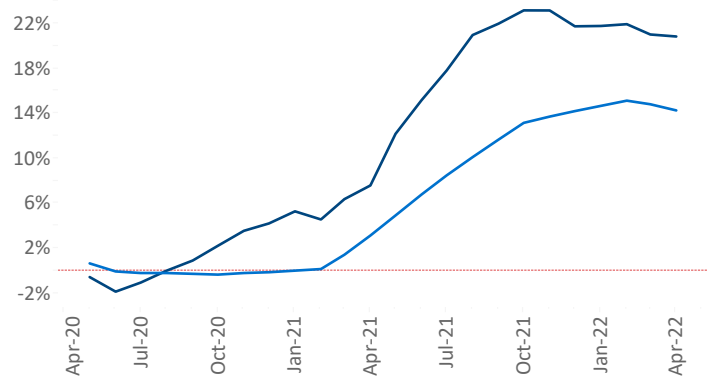
**Employment** in Asheville has grown by **4.6%** ▲ over the past 12 months, while hourly wages have risen by **0.3%** ▲ YoY to **\$26.77** according to the *Bureau of Labor Statistics*.

■ Asheville ■ National

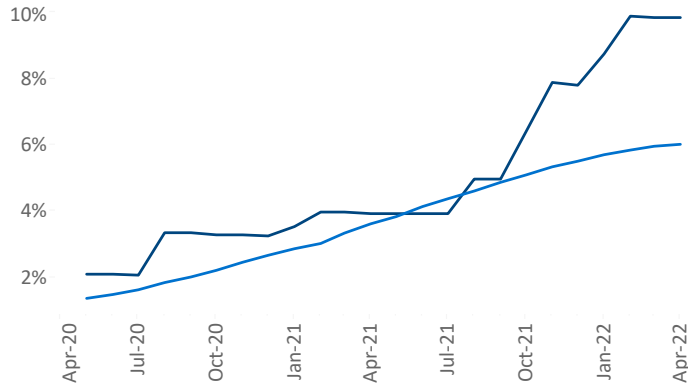
Occupancy



Rent Growth YoY



Units Under Construction as % of Stock



Absorbed Completions T12

